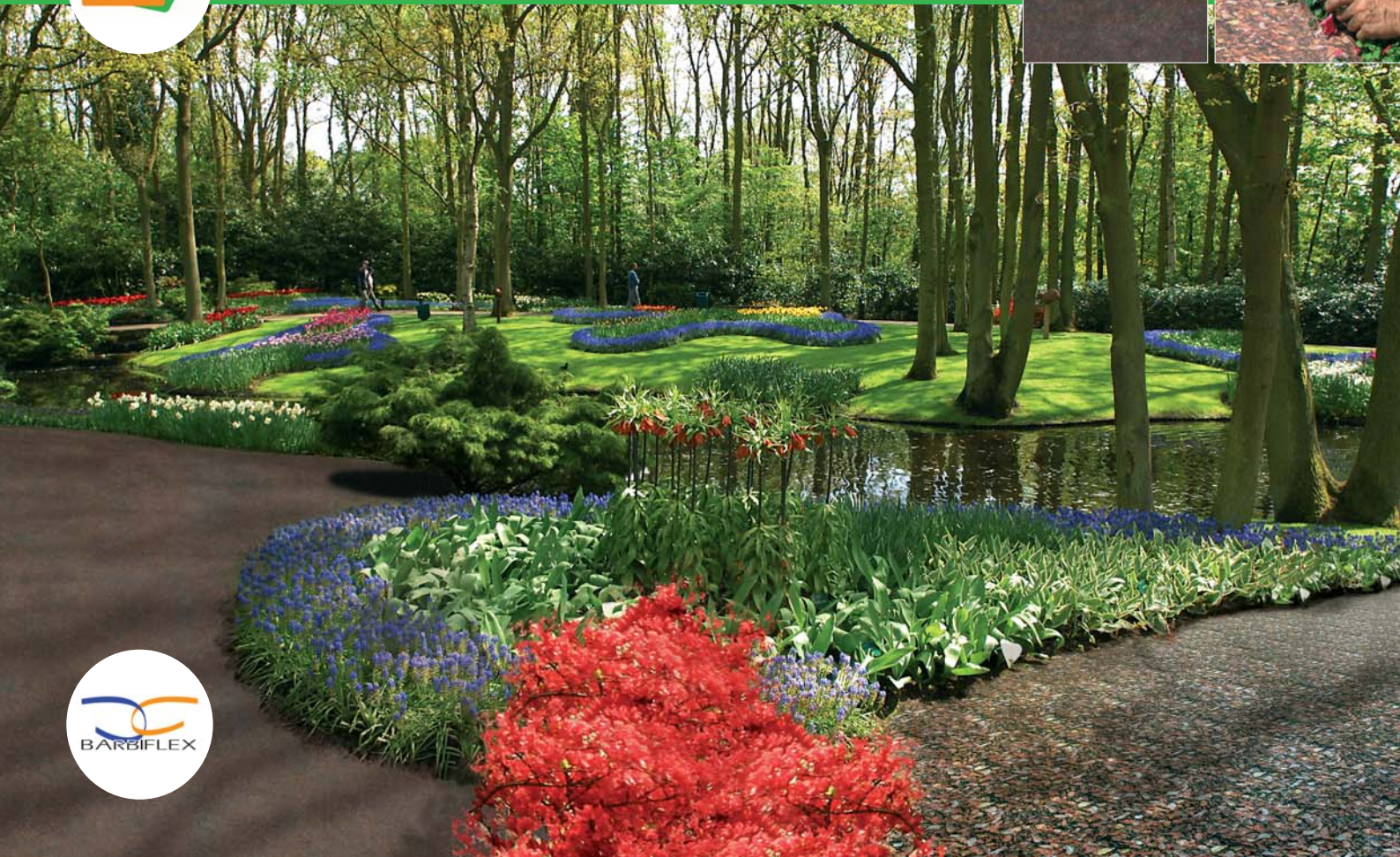




**HOASI®** The rapid and effective mulching system



# HOASI®

## The rapid and effective mulching system

1

**CONTROLS  
GERMINATION**

2

has a **HIGH DRAINING**  
capacity

3

creates an **IDEAL  
MICROCLIMATE**

4

**DEFENDS**  
the root apparatus

5

is **FAST** cleaned and set



**HOASI®** by Barbiflex®, is a **patented innovative mulch system.**

It's 100% made of high quality polyester nonwoven, available in rolls and "do it yourself" packaging.

HOASI®, compared to the conventional black anti-weed sheet, allows a very effective mulching that promotes a better

plants growing, is faster, of great aesthetic impact and at lower costs in comparison to the normal package sheet + bark.

**HOASI®** is available in two basic colours: **HOASI® LAND** and **HOASI® MUSK.**

It's also provided in two printed versions, particularly innovative, that pleasantly reproduce the **effect of bark and lawn.**

# HOASI® is a Barbiflex® patent



**MATCHES** with  
natural environment



**PROTECTS**  
the irrigation system



has a high  
**MECHANICAL  
RESISTANCE**



can be **STEPPED ON** and  
is **SUITABLE** for **ANY  
SLOPE**



is in **RECYCLABLE PET**

**HOASI® bark** and **HOASI® lawn** are really suitable where, due to weather conditions or the necessity of a reduced maintenance, one is looking for a good aesthetic impact at first sight together with long lasting performances.



# 1

## HOASI® CONTROLS GERMINATION

**HOASI®**, thanks to its nonwoven high technical, mechanical and hydraulic structure, it thoroughly prevents the growing of any infester.

Shredding of fibres, typical of a conventional sheet, doesn't occur and the joints can be carried out without any risk of splits; therefore sunlight is completely blocked.





**2**

**HOASI® has a high DRAINING capacity**

**HOASI®**, unlike the conventional sheet, is highly draining and grants a right constant degree of soil humidity, avoiding its drying up together with infestation of parasites, mites and small red spider.

Furthermore **Hoasi®** eases off the weather impact and stops the soil erosion of slopes and escarpments.

# 3

## HOASI® creates an IDEAL MICROCLIMATE

**HOASI®** improves plants hydration by keeping their constant humidity.

This specific feature of being a thermal adjustment ensures ideal growing conditions preventing infestation at the same time.

The excellent permeability and transpiration, also promote a natural air exchange stopping nitrogen formation.



# 4

## HOASI® DEFENDS the root apparatus

HOASI® protects from sudden change in temperature and, mostly in case of intense cold, effectively protects the roots apparatus of plants, bulbs and shoots.



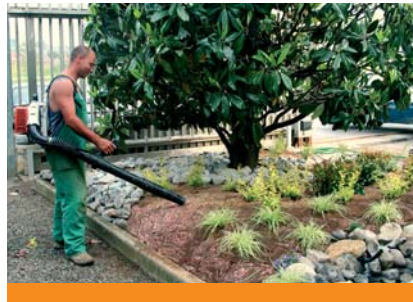
# 5

## HOASI® is FAST cleaned and set

**HOASI®** is particularly fast and easy to be set. Even the overlaps, if needed, are made by fixing the apposite band strips to soil with sticks.

The external sides are easily set underground.

Unlike aesthetical covers in bark and other materials, Hoasi® is easy to be cleaned from dry leaves and other organic deposits by a simple blowing device; even the removal of animal dejection is easy and doesn't leave any traces.



# 6

## HOASI<sup>®</sup> MATCHES with natural environment

HOASI<sup>®</sup>, thanks to the soft natural soil brown and musk green colours, creates a really harmonic visual effect as it was part of the environment. The special bark and lawn printed versions are a good alternative where there is a need of a nice aesthetic impact at first sight together with a reduced maintenance in time.



# 7

## HOASI® PROTECTS the irrigation system


**HOASI®** permits to set the irrigation piping underground, preserving them this way from the UV rays deteriorating action, from animals and any aggressive factor.

Furthermore it eliminates the negative aesthetic impact of a view over pipes.



8

## HOASI® has a high MECHANICAL RESISTANCE

A large, ornate yellow building with a fountain in the foreground and people walking dogs. The building has multiple stories with arched windows and a central entrance. In the foreground, there is a paved area with a fountain, benches, and people walking dogs. The scene is set in a park-like area with trees and a clear sky.

HOASI®, thanks to its own structure, guarantees a high mechanical resistance, stable in time, which makes it unassailable by animals' excavation like the one of cats, dogs and birds.

# 9

## HOASI® can be STEPPED ON and is SUITABLE for ANY SLOPE

**HOASI®** can be thoroughly stepped on without any risk of causing even a very small tear or damage that could allow weeds growing.

Furthermore it's ideal on any slope, escarpment and shore..., where to set a conventional sheet certainly compromises the aesthetical impact and when, because of a slope, it's not possible to cover it with bark or any other materials that will inevitably descend to valley due to gravity.





10

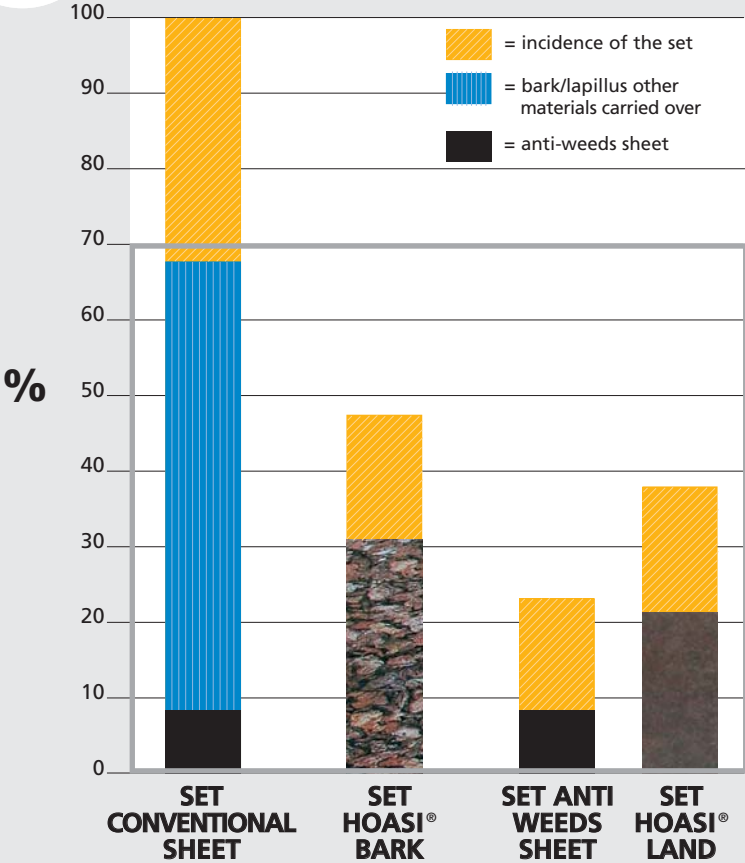
HOASI® is in recyclable PET

HOASI® thanks to its 100% recyclable PET structure, remains always the same even after 20 years. This represents a very important environmental protection because the PET molecular chain is not sensible to atmospheric agents and it doesn't get destroyed unlike a conventional polypropylene sheet which molecules, during time,

slowly penetrate the soil. When one decides to remove Hoasi® could peacefully recycle it completely as it was a regular simple bottle, without any damage for the environment.



# COSTS INCIDENCE compared to the conventional system



From this table it is clear that a classic anti-weeds black/green sheet is still the most economical solution but, as already mentioned, technically and aesthetically limited.

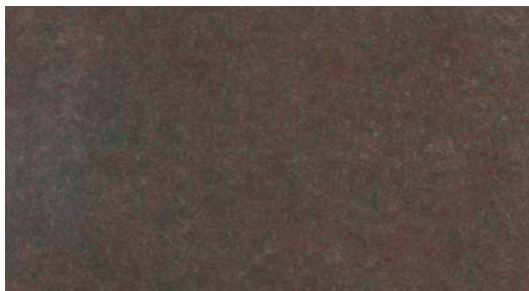
**HOASI® land or musk represents an intermediate solution under the cost view point but it certainly grants better technical and aesthetical performances.**

If the covering is made of bark, is this traditional system the most expensive, even more than the HOASI® bark/lawn version.

Furthermore, it's important to consider how simple is to set only rolls in comparison to a traditional time of setting and volume to be transported, in addition to these factors the maintenance time and complexity.



## HOASI® is a Barbiflex® patent. Drawings Table \*



### HOASI® LAND

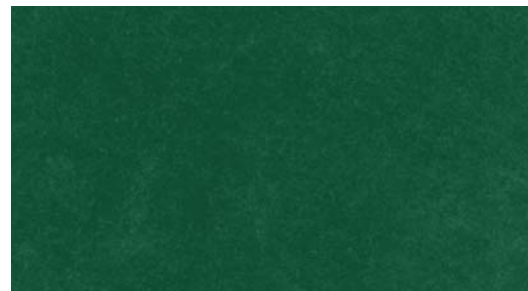
measures: h **m 1 - 2 - 4,5**  
length **50 linear meters or more**  
upon request



### HOASI® BARK

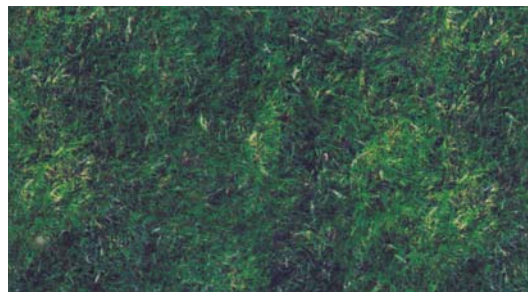
measures: h **m 1 - 2**  
length **50 linear**  
**meters**

**“do it yourself”**  
packaging  
1 x 10m  
2 x 5m



### HOASI® MUSK

measures: h **m 1 - 2 - 4,5**  
length **50 linear meters or more**  
upon request



### HOASI® LAWN

measures: h **m 1 - 2**  
length **50 linear**  
**meters**

**“do it yourself”**  
packaging  
1 x 10m  
2 x 5m

\* The printing on paper doesn't reproduce the colours accurately; they are purely indicative.

Barbiflex® is not only Hoasi®, visit our web site  
**www.barbiflex.it**



PRODUZIONE NONTESSTUTI · PRODUZIONE IMBOTTITI  
NONWOVEN PRODUCTION · WADDING PRODUCTION

**Barbiflex®**

via Lombardia, 27 · 20048 Carate Brianza (Mi) · Italy

tel +39 0362 992342 · fax +39 0362 991475

[www.barbiflex.it](http://www.barbiflex.it) · [info@barbiflex.it](mailto:info@barbiflex.it)